

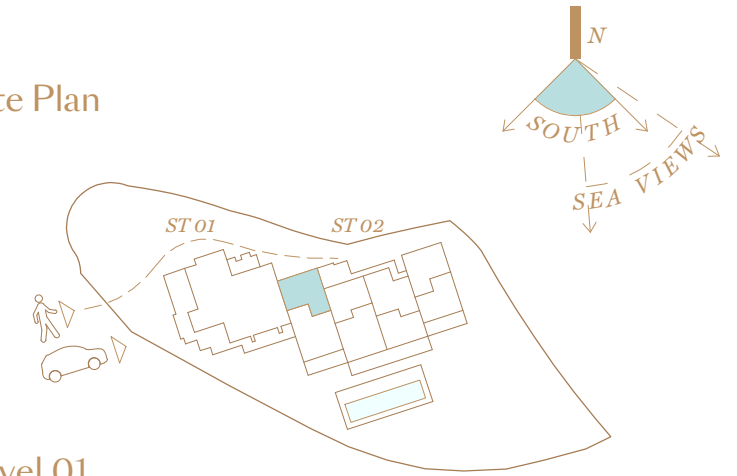


3 Bedroom Apartment

APT // 02.2.1

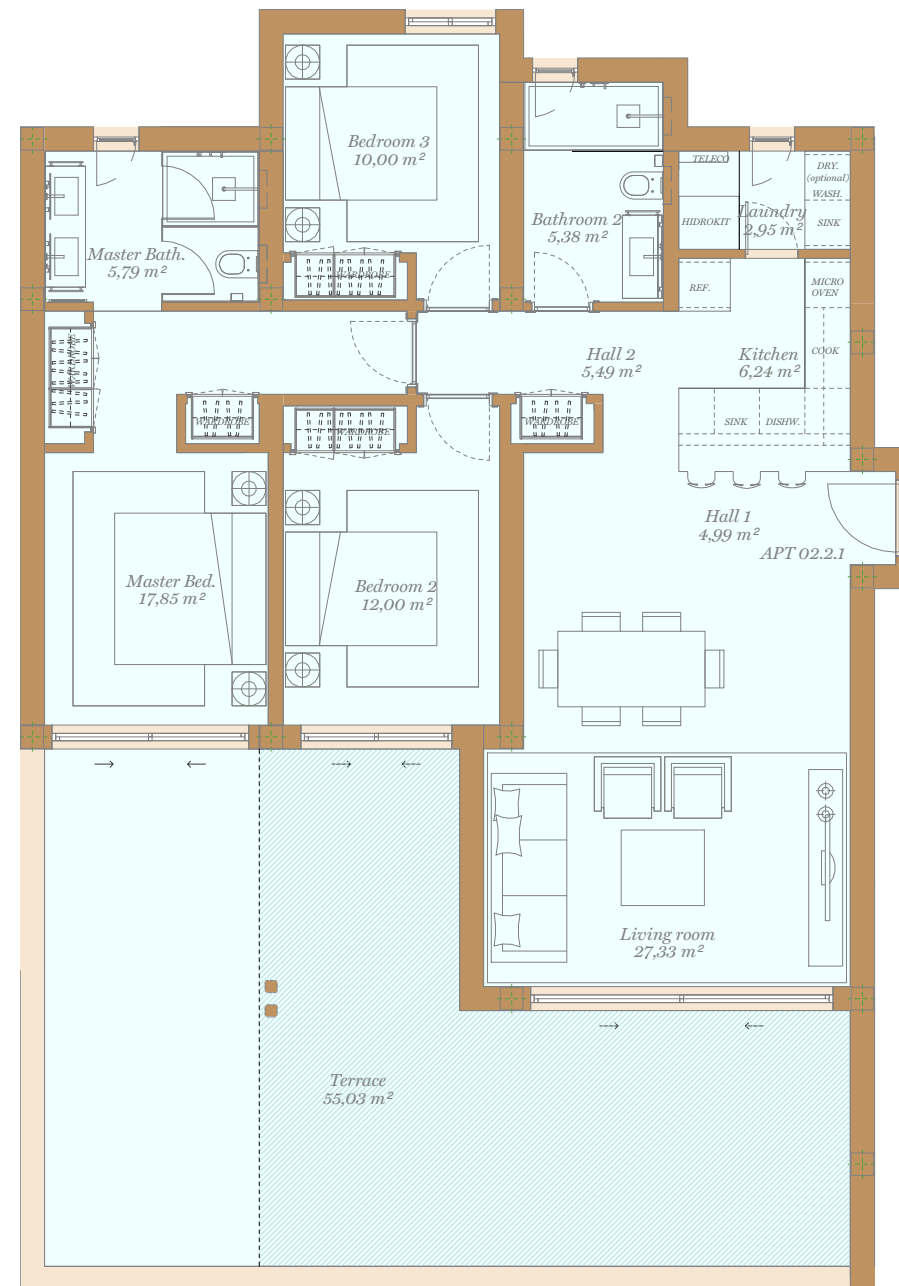
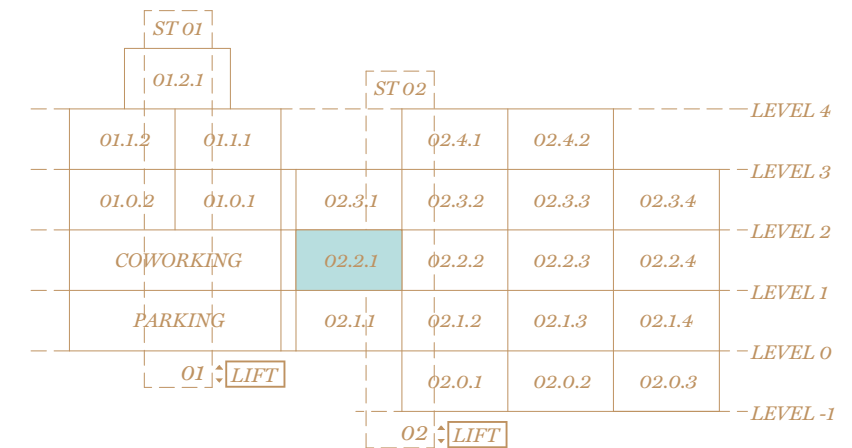
116,16 60,73 3 2 1 1

Site Plan



Level 01

Stair | 02



Apartment | 02.2.1

Indoor Usable Area	98,03 m ²
Terrace Usable Area	55,03 m ²
Total Usable Area	153,06 m²
Total Usable Area (D 218/2005)	107,83 m ²

Indoor Constructed Area	116,16 m ²
Terrace Constructed Area	60,73 m ²
Total Constructed Area	176,89 m²

Garden (C.A.w.E.U.)	
Proportional Share in Olivos Coworking (4,96%)	10,92 m ²
Palo Alto Community Coworking (General Access)	227,06 m ²

